

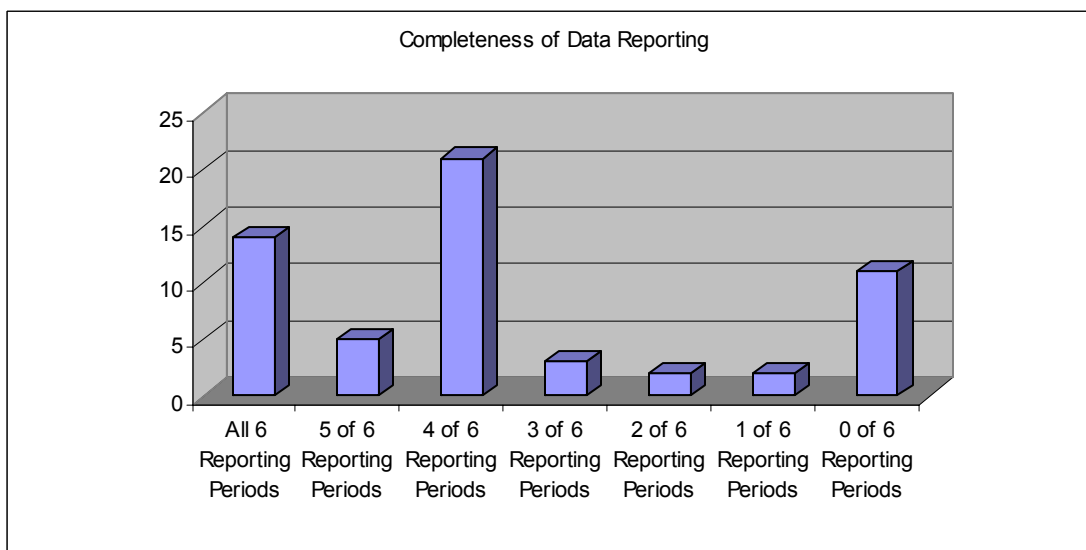
Annual Data Report

The following data was compiled from data sheets submitted from participating agencies as well as automated data entry into the data collection web site located at www.careofnorthamerica.org.

The information that may be gleaned from the following graphs and tables is as accurate and complete as the data submitted. There are some differences in the manner in which member agencies report data. Reporting differences include both the category of roadways within their jurisdiction that data is gathered from as well as which elements are collected. Comparisons between states and/or regions may be suspect due to these differences in collection criteria. For this reason trend interpretation may also be suspect.

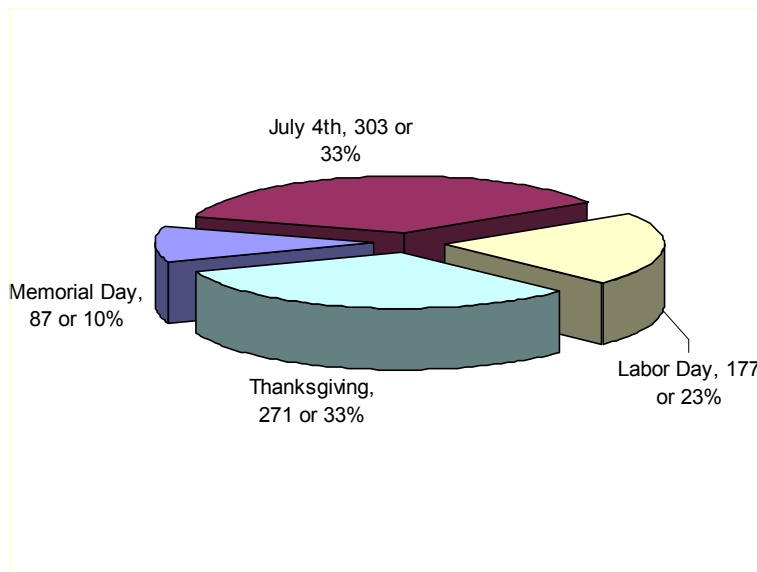
This period marked the first year CARE utilized a nationwide automated reporting system to collect reporting data. This system was accessible to all member agencies upon request and issuance of login information.

| Completeness of Data Reporting | | | |
|--------------------------------|------|------|-------|
| | 2005 | 2006 | %Δ |
| All 6 Reporting Periods | 15 | 14 | 14.07 |
| 5 of 6 Reporting Periods | 9 | 5 | 8.44 |
| 4 of 6 Reporting Periods | 6 | 21 | 2.50 |
| 3 of 6 Reporting Periods | 6 | 3 | 5.50 |
| 2 of 6 Reporting Periods | 4 | 2 | 3.50 |
| 1 of 6 Reporting Periods | 5 | 2 | 4.60 |
| 0 of 6 Reporting Periods | 13 | 11 | 12.15 |
| Missing Buckle up only | 7 | 0 | 7.00 |
| Missing Lifesaver only | 1 | 0 | 1.00 |
| Reported all four Holidays | 24 | 16 | 23.33 |



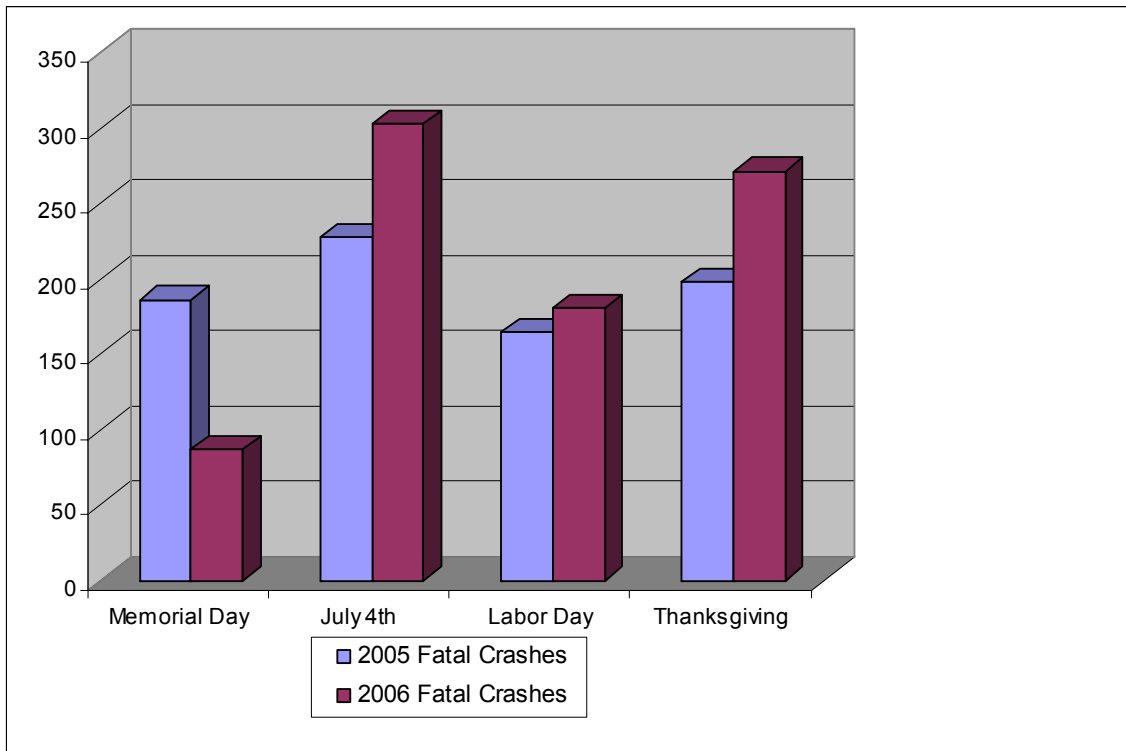
| Completeness of Data Reporting by Region | | | |
|------------------------------------------|--------------------------|----------------------------------|----------------------------------|
| Year | | 2005 | 2006 |
| Region | Total Agencies in Region | Agencies reporting at least once | Agencies reporting at least once |
| I | 7 | 6 | 6 |
| II | 6 | 4 | 3 |
| III | 4 | 4 | 3 |
| IV | 8 | 8 | 8 |
| V | 8 | 7 | 7 |
| VI | 5 | 4 | 4 |
| VII | 4 | 2 | 4 |
| VIII | 6 | 6 | 6 |
| IX | 6 | 3 | 3 |
| X | 4 | 3 | 3 |
| Total | 58 | 47 | 47 |

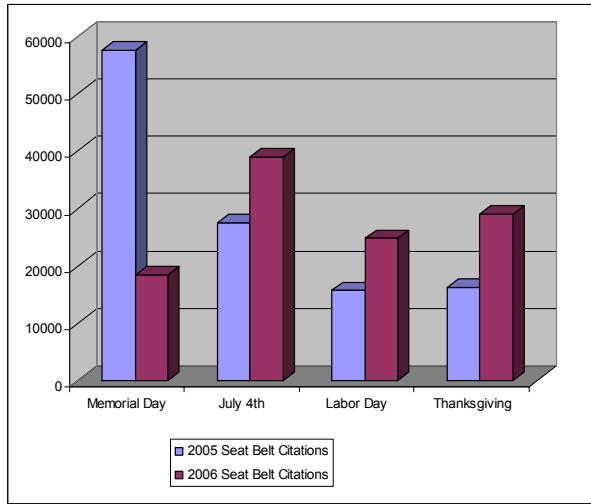
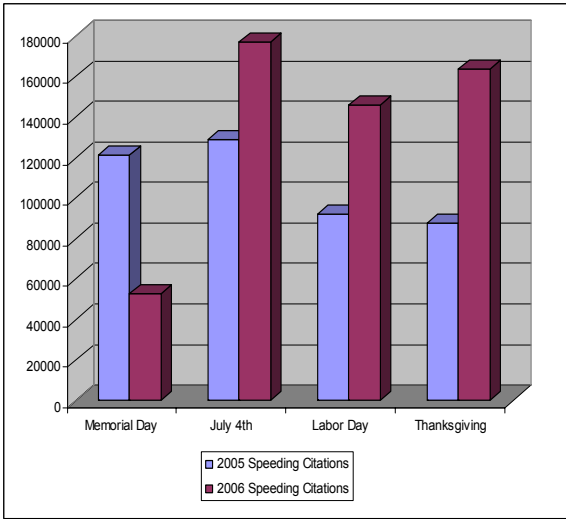
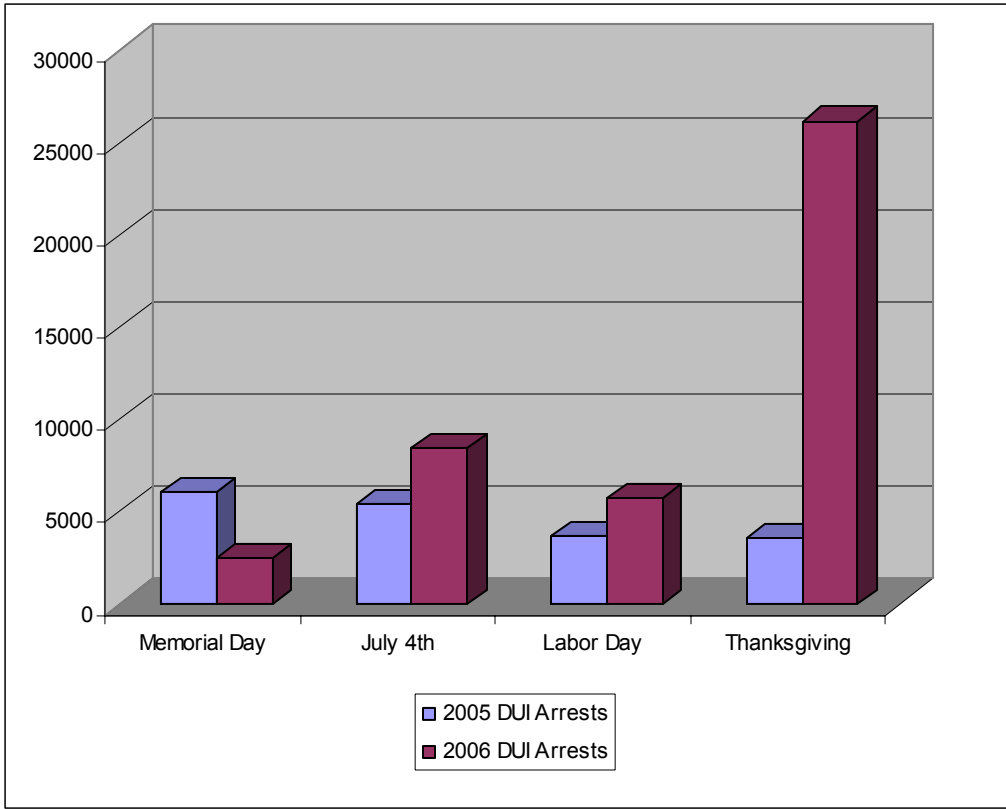
| 2006 Reported Holiday Enforcement Data Summary | | | | | | | | | | | | |
|------------------------------------------------|--------------|-------|--------|----------|--------|---------|-----------|--------|---------|--------------|--------|---------|
| Care Holidays | Memorial Day | | | July 4th | | | Labor Day | | | Thanksgiving | | |
| | 2005 | 2006 | % Chg | 2005 | 2006 | % Chg | 2005 | 2006 | % Chg | 2005 | 2006 | % Chg |
| All Hwy Fatal Crashes | 186 | 87 | -53.23 | 227 | 303 | 33.48 | 165 | 181 | 9.70 | 198 | 271 | 36.87 |
| All Hwy Fatalities/Deaths | 207 | 96 | -53.62 | 239 | 328 | 37.24 | 185 | 215 | 16.22 | 232 | 322 | 38.79 |
| All Hwy Fatalities W/belts | 99 | 42 | -57.58 | 87 | 135 | 55.17 | 61 | 91 | 49.18 | 115 | 116 | 0.87 |
| Alcohol Related Crashes | 562 | 4048 | 620.28 | 775 | 12926 | 1567.87 | 482 | 10546 | 2087.97 | 660 | 16692 | 2429.09 |
| DUI Arrests | 6028 | 2464 | -59.12 | 5418 | 8477 | 56.46 | 3659 | 5740 | 56.87 | 3535 | 26150 | 639.75 |
| Speed Citations | 121626 | 52943 | -56.47 | 129157 | 177253 | 37.24 | 92004 | 145915 | 58.60 | 87675 | 164065 | 87.13 |
| Seat Belt Citations | 57581 | 18525 | -67.83 | 27596 | 38987 | 41.28 | 15759 | 24811 | 57.44 | 16217 | 29102 | 79.45 |
| Motorist Assists | 36304 | 16138 | -55.55 | 29640 | 45444 | 53.32 | 21896 | 35234 | 60.92 | 28416 | 46571 | 63.89 |



2006 Holiday Totals

| 2006 Holiday Totals | | | |
|----------------------------|--------|--------|---------|
| Holiday Totals | 2005 | 2006 | % Chg |
| All Hwy Fatal Crashes | 776 | 842 | 8.51 |
| All Hwy Fatalities/Deaths | 863 | 961 | 11.36 |
| All Hwy Fatalities W/belts | 362 | 384 | 6.08 |
| Alcohol Related Crashes | 2479 | 44212 | 1683.46 |
| DUI Arrests | 18640 | 42831 | 129.78 |
| Speed Citations | 430462 | 540176 | 25.49 |
| Seat Belt Citations | 117153 | 111425 | -4.89 |
| Motorist Assists | 116256 | 143387 | 23.34 |





National Statistics by Region

| All American Buckle-up Week | Totals | Region I | Region II | Region III | Region IV | Region V | Region VI | Region VII | Region VIII | Region IX | Region X |
|-----------------------------|--------|----------|-----------|------------|-----------|----------|-----------|------------|-------------|-----------|----------|
| Seat Belt Citations | 17622 | 4011 | 3077 | 519 | 0 | 0 | 3242 | 0 | 6202 | 571 | 0 |
| Child Restraint | 1132 | 122 | 90 | 81 | 0 | 0 | 162 | 0 | 584 | 93 | 0 |

| Memorial Day Weekend | Totals | Region I | Region II | Region III | Region IV | Region V | Region VI | Region VII | Region VIII | Region IX | Region X |
|----------------------------|--------|----------|-----------|------------|-----------|----------|-----------|------------|-------------|-----------|----------|
| Fatal Crashes | 87 | 9 | 4 | 10 | 0 | 0 | 34 | 0 | 25 | 5 | 0 |
| Fatalities | 96 | 13 | 4 | 11 | 0 | 0 | 38 | 0 | 25 | 5 | 0 |
| Fatalities W/Seat Belt | 42 | 1 | 4 | 3 | 0 | 0 | 21 | 0 | 11 | 2 | 0 |
| DUI arrests | 2464 | 154 | 201 | 263 | 0 | 0 | 1061 | 0 | 674 | 111 | 0 |
| Speeding Citations | 52943 | 5596 | 8410 | 6452 | 0 | 0 | 16392 | 0 | 13339 | 2754 | 0 |
| Seat Belt Citations | 18525 | 2187 | 1261 | 519 | 0 | 0 | 8111 | 0 | 5901 | 546 | 0 |
| Seat Belt Warnings | 12469 | 708 | 149 | 11266 | 0 | 0 | 10 | 0 | 312 | 24 | 0 |
| Child Restraint Citations | 1501 | 104 | 45 | 81 | 0 | 0 | 701 | 0 | 570 | 0 | 0 |
| Child Restraint Warnings | 216 | 68 | 2 | 0 | 0 | 0 | 6 | 0 | 131 | 9 | 0 |
| Highway Collisions | 412 | 26 | 12 | 86 | 0 | 0 | 154 | 0 | 127 | 7 | 0 |
| Alcohol Related Collisions | 4048 | 618 | 267 | 807 | 0 | 0 | 1215 | 0 | 923 | 218 | 0 |
| Motorist Assists | 16138 | 873 | 0 | 0 | 0 | 0 | 2464 | 0 | 11074 | 1727 | 0 |

| July 4th Weekend | Totals | Region I | Region II | Region III | Region IV | Region V | Region VI | Region VII | Region VIII | Region IX | Region X |
|----------------------------|--------|----------|-----------|------------|-----------|----------|-----------|------------|-------------|-----------|----------|
| Fatal Crashes | 303 | 7 | 12 | 29 | 101 | 31 | 38 | 19 | 13 | 35 | 18 |
| Fatalities | 328 | 7 | 12 | 25 | 109 | 33 | 45 | 19 | 14 | 43 | 21 |
| Fatalities W/Seat Belt | 135 | 1 | 9 | 20 | 32 | 8 | 22 | 9 | 6 | 19 | 9 |
| DUI arrests | 8477 | 186 | 543 | 471 | 1487 | 1401 | 1124 | 316 | 400 | 2160 | 389 |
| Speeding Citations | 177253 | 7799 | 14766 | 16516 | 36911 | 31546 | 17889 | 9678 | 7005 | 28259 | 6884 |
| Seat Belt Citations | 38987 | 1219 | 2111 | 1568 | 10656 | 9506 | 4463 | 1906 | 970 | 5803 | 785 |
| Seat Belt Warnings | 4496 | 519 | 112 | 1179 | 547 | 402 | 755 | 288 | 162 | 80 | 452 |
| Child Restraint Citations | 4103 | 95 | 150 | 409 | 1021 | 523 | 836 | 174 | 172 | 662 | 61 |
| Child Restraint Warnings | 332 | 60 | 5 | 0 | 74 | 30 | 20 | 40 | 65 | 14 | 24 |
| Highway Collisions | 1143 | 31 | 83 | 104 | 415 | 116 | 174 | 76 | 72 | 31 | 41 |
| Alcohol Related Collisions | 12926 | 589 | 1203 | 1867 | 3870 | 2250 | 1287 | 264 | 564 | 662 | 370 |
| Motorist Assists | 45444 | 2065 | 298 | 4309 | 10030 | 13939 | 3859 | 2568 | 2975 | 2613 | 2788 |

| Labor Day Weekend | Totals | Region I | Region II | Region III | Region IV | Region V | Region VI | Region VII | Region VIII | Region IX | Region X |
|----------------------------|--------|----------|-----------|------------|-----------|----------|-----------|------------|-------------|-----------|----------|
| Fatal Crashes | 181 | 3 | 8 | 13 | 50 | 29 | 29 | 15 | 19 | 4 | 11 |
| Fatalities | 215 | 3 | 8 | 16 | 52 | 32 | 48 | 17 | 21 | 7 | 11 |
| Fatalities W/Seat Belt | 91 | 0 | 6 | 5 | 13 | 11 | 28 | 11 | 10 | 3 | 4 |
| DUI arrests | 5740 | 177 | 344 | 437 | 1131 | 1123 | 1208 | 257 | 393 | 274 | 396 |
| Speeding Citations | 145915 | 15235 | 7919 | 12163 | 31330 | 31858 | 21080 | 5874 | 6878 | 5485 | 8093 |
| Seat Belt Citations | 24811 | 713 | 1077 | 878 | 5307 | 7721 | 4892 | 1395 | 1168 | 846 | 814 |
| Seat Belt Warnings | 3340 | 362 | 78 | 977 | 685 | 171 | 185 | 200 | 120 | 126 | 436 |
| Child Restraint Citations | 2261 | 51 | 50 | 203 | 660 | 214 | 715 | 62 | 127 | 111 | 68 |
| Child Restraint Warnings | 231 | 48 | 1 | 0 | 14 | 13 | 25 | 10 | 79 | 18 | 23 |
| Highway Collisions | 888 | 34 | 39 | 91 | 240 | 93 | 184 | 47 | 81 | 38 | 41 |
| Alcohol Related Collisions | 10546 | 589 | 1026 | 1817 | 2734 | 1589 | 1287 | 213 | 575 | 452 | 264 |
| Motorist Assists | 35234 | 1669 | 131 | 3652 | 7037 | 9751 | 3373 | 1996 | 2856 | 2743 | 2026 |

| Thanksgiving Holiday | Totals | Region I | Region II | Region III | Region IV | Region V | Region VI | Region VII | Region VIII | Region IX | Region X |
|----------------------------|--------|----------|-----------|------------|-----------|----------|-----------|------------|-------------|-----------|----------|
| Fatal Crashes | 271 | 6 | 9 | 27 | 76 | 34 | 48 | 14 | 18 | 27 | 12 |
| Fatalities | 322 | 7 | 9 | 27 | 82 | 39 | 70 | 19 | 21 | 31 | 17 |
| Fatalities W/Seat Belt | 116 | 0 | 3 | 5 | 19 | 18 | 29 | 6 | 9 | 15 | 12 |
| DUI arrests | 26150 | 978 | 499 | 520 | 1462 | 1071 | 971 | 236 | 341 | 19554 | 518 |
| Speeding Citations | 164065 | 7090 | 9944 | 14737 | 56884 | 23533 | 23945 | 8454 | 7134 | 7222 | 5122 |
| Seat Belt Citations | 29102 | 1073 | 4159 | 1185 | 8634 | 6402 | 3715 | 1560 | 1132 | 677 | 565 |
| Seat Belt Warnings | 16658 | 359 | 74 | 13847 | 1204 | 276 | 167 | 159 | 129 | 324 | 119 |
| Child Restraint Citations | 5742 | 61 | 133 | 287 | 4016 | 262 | 573 | 87 | 172 | 108 | 43 |
| Child Restraint Warnings | 250 | 21 | 5 | 0 | 55 | 42 | 24 | 25 | 58 | 9 | 11 |
| Highway Collisions | 1256 | 25 | 76 | 103 | 356 | 77 | 209 | 56 | 74 | 227 | 53 |
| Alcohol Related Collisions | 16692 | 830 | 1479 | 2224 | 5258 | 3514 | 1786 | 388 | 583 | 565 | 65 |
| Motorist Assists | 46571 | 1980 | 180 | 3748 | 10912 | 9508 | 3779 | 2512 | 2165 | 8803 | 2984 |

| Care Life Savers Weekend | Totals | Region I | Region II | Region III | Region IV | Region V | Region VI | Region VII | Region VIII | Region IX | Region X |
|----------------------------|--------|----------|-----------|------------|-----------|----------|-----------|------------|-------------|-----------|----------|
| Fatal Crashes | 125 | 4 | 6 | 9 | 50 | 15 | 22 | 6 | 1 | 6 | 6 |
| Fatalities | 134 | 4 | 6 | 9 | 53 | 16 | 25 | 6 | 1 | 8 | 6 |
| Fatalities W/Seat Belt | 52 | 0 | 2 | 6 | 21 | 5 | 13 | 1 | 0 | 4 | 0 |
| DUI arrests | 4237 | 175 | 392 | 327 | 894 | 799 | 745 | 181 | 247 | 167 | 310 |
| Speeding Citations | 60350 | 4098 | 5501 | 6272 | 16918 | 9038 | 9367 | 3110 | 2221 | 1890 | 1935 |
| Seat Belt Citations | 11820 | 631 | 844 | 523 | 3594 | 1968 | 2063 | 885 | 518 | 380 | 414 |
| Seat Belt Warnings | 1761 | 129 | 22 | 652 | 518 | 115 | 55 | 103 | 69 | 16 | 82 |
| Child Restraint Citations | 945 | 26 | 36 | 92 | 313 | 41 | 253 | 49 | 42 | 60 | 33 |
| Child Restraint Warnings | 243 | 129 | 1 | 40 | 16 | 21 | 9 | 0 | 17 | 4 | 6 |
| Highway Collisions | 776 | 26 | 57 | 75 | 266 | 36 | 156 | 47 | 51 | 43 | 19 |
| Alcohol Related Collisions | 8788 | 433 | 785 | 862 | 3255 | 856 | 1060 | 183 | 565 | 443 | 346 |
| Motorist Assists | 18559 | 1452 | 69 | 1181 | 5143 | 4013 | 1723 | 1200 | 1235 | 1280 | 1263 |

Region I Statistics by State

| All American Buckle-up Week | Region I Totals | Conneticut | Maine | Massachusetts | New Hampshire | Rhode Island | Vermont | Quebec |
|-----------------------------|-----------------|------------|-------|---------------|---------------|--------------|---------|--------|
| Seat Belt Citations | 4011 | 2899 | 175 | 555 | 77 | 172 | 133 | |
| Child Restraint | 122 | 0 | 0 | 48 | 31 | 11 | 32 | |

| Memorial Day Weekend | Region I Totals | Conneticut | Maine | Massachusetts | New Hampshire | Rhode Island | Vermont | Quebec |
|----------------------------|-----------------|------------|-------|---------------|---------------|--------------|---------|--------|
| Fatal Crashes | 9 | 4 | 2 | 2 | 1 | 0 | 0 | |
| Fatalities | 13 | 5 | 4 | 2 | 2 | 0 | 0 | |
| Fatalities W/Seat Belt | 1 | 0 | 1 | 0 | 0 | 0 | 0 | |
| DUI arrests | 154 | 71 | 13 | 0 | 31 | 5 | 34 | |
| Speeding Citations | 5596 | 1404 | 1099 | 74 | 1628 | 635 | 756 | |
| Seat Belt Citations | 2187 | 1368 | 129 | 369 | 45 | 190 | 86 | |
| Seat Belt Warnings | 708 | 198 | 214 | 196 | 26 | 0 | 74 | |
| Child Restraint Citations | 104 | 0 | 0 | 44 | 31 | 13 | 16 | |
| Child Restraint Warnings | 68 | 0 | 16 | 25 | 23 | 0 | 4 | |
| Highway Collisions | 26 | 14 | 0 | 0 | 3 | 0 | 9 | |
| Alcohol Related Collisions | 618 | 363 | 56 | 91 | 21 | 42 | 45 | |
| Motorist Assists | 873 | 83 | 344 | 21 | 240 | 45 | 140 | |

| July 4th Weekend | Region I Totals | Conneticut | Maine | Massachusetts | New Hampshire | Rhode Island | Vermont | Quebec |
|----------------------------|-----------------|------------|-------|---------------|---------------|--------------|---------|--------|
| Fatal Crashes | 7 | 3 | 1 | 3 | 0 | 0 | 0 | |
| Fatalities | 7 | 3 | 1 | 3 | 0 | 0 | 0 | |
| Fatalities W/Seat Belt | 1 | 0 | 1 | 0 | 0 | 0 | 0 | |
| DUI arrests | 186 | 52 | 24 | 25 | 38 | 10 | 37 | |
| Speeding Citations | 7799 | 1505 | 1111 | 1834 | 1781 | 343 | 1225 | |
| Seat Belt Citations | 1219 | 357 | 108 | 625 | 25 | 74 | 30 | |
| Seat Belt Warnings | 519 | 32 | 107 | 342 | 25 | 0 | 13 | |
| Child Restraint Citations | 95 | 1 | 3 | 58 | 8 | 12 | 13 | |
| Child Restraint Warnings | 60 | 0 | 3 | 31 | 16 | 0 | 10 | |
| Highway Collisions | 31 | 5 | 4 | 9 | 4 | 1 | 8 | |
| Alcohol Related Collisions | 589 | 281 | 47 | 121 | 18 | 51 | 71 | |
| Motorist Assists | 2065 | 78 | 289 | 1222 | 254 | 33 | 189 | |

| Labor Day Weekend | Region I Totals | Conneticut | Maine | Massachusetts | New Hampshire | Rhode Island | Vermont | Quebec |
|----------------------------|-----------------|------------|-------|---------------|---------------|--------------|---------|--------|
| Fatal Crashes | 3 | 1 | 1 | 1 | 0 | 0 | 0 | |
| Fatalities | 3 | 1 | 1 | 1 | 0 | 0 | 0 | |
| Fatalities W/Seat Belt | 0 | 0 | 0 | 0 | 0 | 0 | 0 | |
| DUI arrests | 177 | 51 | 15 | 26 | 40 | 4 | 41 | |
| Speeding Citations | 15235 | 976 | 951 | 1679 | 1301 | 320 | 10008 | |
| Seat Belt Citations | 713 | 283 | 63 | 266 | 12 | 41 | 48 | |
| Seat Belt Warnings | 362 | 50 | 130 | 89 | 63 | 0 | 30 | |
| Child Restraint Citations | 51 | 0 | 2 | 26 | 0 | 8 | 15 | |
| Child Restraint Warnings | 48 | 0 | 2 | 14 | 30 | 0 | 2 | |
| Highway Collisions | 34 | 6 | 7 | 3 | 4 | 1 | 13 | |
| Alcohol Related Collisions | 589 | 305 | 48 | 112 | 29 | 51 | 44 | |
| Motorist Assists | 1669 | 162 | 218 | 880 | 243 | 26 | 140 | |

| Thanksgiving Holiday | Region I Totals | Conneticut | Maine | Massachusetts | New Hampshire | Rhode Island | Vermont | Quebec |
|----------------------------|-----------------|------------|-------|---------------|---------------|--------------|---------|--------|
| Fatal Crashes | 6 | 1 | 0 | 4 | 1 | | 0 | |
| Fatalities | 7 | 1 | 0 | 5 | 1 | | 0 | |
| Fatalities W/Seat Belt | 0 | 0 | 0 | 0 | 0 | | 0 | |
| DUI arrests | 978 | 62 | 18 | 842 | 30 | | 26 | |
| Speeding Citations | 7090 | 1437 | 1138 | 2157 | 1123 | | 1235 | |
| Seat Belt Citations | 1073 | 553 | 65 | 406 | 3 | | 46 | |
| Seat Belt Warnings | 359 | 74 | 110 | 148 | 2 | | 25 | |
| Child Restraint Citations | 61 | 0 | 3 | 52 | 1 | | 5 | |
| Child Restraint Warnings | 21 | 0 | 4 | 15 | 2 | | 0 | |
| Highway Collisions | 25 | 8 | 4 | 11 | 2 | | 0 | |
| Alcohol Related Collisions | 830 | 501 | 43 | 183 | 30 | | 73 | |
| Motorist Assists | 1980 | 216 | 266 | 1293 | 95 | | 110 | |

| Care Life Savers Weekend | Region I Totals | Conneticut | Maine | Massachusetts | New Hampshire | Rhode Island | Vermont | Quebec |
|----------------------------|-----------------|------------|-------|---------------|---------------|--------------|---------|--------|
| Fatal Crashes | 4 | 0 | | 3 | 0 | 1 | 0 | |
| Fatalities | 4 | 0 | | 3 | 0 | 1 | 0 | |
| Fatalities W/Seat Belt | 0 | 0 | | 0 | 0 | 0 | 0 | |
| DUI arrests | 175 | 56 | | 65 | 22 | 2 | 30 | |
| Speeding Citations | 4098 | 838 | | 2091 | 294 | 419 | 456 | |
| Seat Belt Citations | 631 | 157 | | 377 | 0 | 79 | 18 | |
| Seat Belt Warnings | 129 | 28 | | 93 | 0 | 0 | 8 | |
| Child Restraint Citations | 26 | 0 | | 19 | 0 | 6 | 1 | |
| Child Restraint Warnings | 27 | 0 | | 22 | 5 | 0 | 0 | |
| Highway Collisions | 26 | 5 | | 14 | 1 | 0 | 6 | |
| Alcohol Related Collisions | 433 | 206 | | 134 | 23 | 30 | 40 | |
| Motorist Assists | 1452 | 148 | | 993 | 221 | 32 | 58 | |

Region II Statistics by State

| All American Buckle-up Week | Region II Totals | Delaware | Maryland | New Jersey | New York | Puerto Rico | Virgin Islands |
|-----------------------------|------------------|----------|----------|------------|----------|-------------|----------------|
| Seat Belt Citations | 3077 | 580 | 2497 | | | | |
| Child Restraint | 90 | 34 | 56 | | | | |

| Memorial Day Weekend | Region II Totals | Delaware | Maryland | New Jersey | New York | Puerto Rico | Virgin Islands |
|----------------------------|------------------|----------|----------|------------|----------|-------------|----------------|
| Fatal Crashes | 4 | | 4 | | | | |
| Fatalities | 4 | | 4 | | | | |
| Fatalities W/Seat Belt | 4 | | 4 | | | | |
| DUI arrests | 201 | | 201 | | | | |
| Speeding Citations | 8410 | | 8410 | | | | |
| Seat Belt Citations | 1261 | | 1261 | | | | |
| Seat Belt Warnings | 149 | | 149 | | | | |
| Child Restraint Citations | 45 | | 45 | | | | |
| Child Restraint Warnings | 2 | | 2 | | | | |
| Highway Collisions | 12 | | 12 | | | | |
| Alcohol Related Collisions | 267 | | 267 | | | | |
| Motorist Assists | 0 | | 0 | | | | |

| July 4th Weekend | Region II Totals | Delaware | Maryland | New Jersey | New York | Puerto Rico | Virgin Islands |
|----------------------------|------------------|----------|----------|------------|----------|-------------|----------------|
| Fatal Crashes | 12 | 2 | 5 | | 5 | | |
| Fatalities | 12 | 2 | 5 | | 5 | | |
| Fatalities W/Seat Belt | 9 | 2 | 3 | | 4 | | |
| DUI arrests | 543 | 72 | 179 | | 292 | | |
| Speeding Citations | 14766 | 1022 | 8289 | | 5455 | | |
| Seat Belt Citations | 2111 | 293 | 897 | | 921 | | |
| Seat Belt Warnings | 112 | 0 | 112 | | 0 | | |
| Child Restraint Citations | 150 | 16 | 58 | | 76 | | |
| Child Restraint Warnings | 5 | 0 | 5 | | 0 | | |
| Highway Collisions | 83 | 24 | 17 | | 42 | | |
| Alcohol Related Collisions | 1203 | 242 | 272 | | 689 | | |
| Motorist Assists | 298 | 298 | 0 | | 0 | | |

| Labor Day Weekend | Region II Totals | Delaware | Maryland | New Jersey | New York | Puerto Rico | Virgin Islands |
|----------------------------|------------------|----------|----------|------------|----------|-------------|----------------|
| Fatal Crashes | 8 | 0 | 4 | | 4 | | |
| Fatalities | 8 | 0 | 4 | | 4 | | |
| Fatalities W/Seat Belt | 6 | 0 | 4 | | 2 | | |
| DUI arrests | 344 | 32 | 131 | | 181 | | |
| Speeding Citations | 7919 | 267 | 4081 | | 3571 | | |
| Seat Belt Citations | 1077 | 53 | 462 | | 562 | | |
| Seat Belt Warnings | 78 | 0 | 78 | | 0 | | |
| Child Restraint Citations | 50 | 0 | 30 | | 20 | | |
| Child Restraint Warnings | 1 | 0 | 1 | | 0 | | |
| Highway Collisions | 39 | 7 | 10 | | 22 | | |
| Alcohol Related Collisions | 1026 | 87 | 401 | | 538 | | |
| Motorist Assists | 131 | 131 | 0 | | 0 | | |

| Thanksgiving Holiday | Region II Totals | Delaware | Maryland | New Jersey | New York | Puerto Rico | Virgin Islands |
|----------------------------|------------------|----------|----------|------------|----------|-------------|----------------|
| Fatal Crashes | 9 | 1 | 5 | | 3 | | |
| Fatalities | 9 | 1 | 5 | | 3 | | |
| Fatalities W/Seat Belt | 3 | 0 | 3 | | 0 | | |
| DUI arrests | 499 | 72 | 148 | | 279 | | |
| Speeding Citations | 9944 | 682 | 3796 | | 5466 | | |
| Seat Belt Citations | 4159 | 65 | 479 | | 3615 | | |
| Seat Belt Warnings | 74 | 0 | 74 | | 0 | | |
| Child Restraint Citations | 133 | 8 | 8 | | 117 | | |
| Child Restraint Warnings | 5 | 0 | 5 | | 0 | | |
| Highway Collisions | 76 | 23 | 15 | | 38 | | |
| Alcohol Related Collisions | 1479 | 199 | 386 | | 894 | | |
| Motorist Assists | 180 | 180 | 0 | | 0 | | |

| CARE Livesaver Weekend | Region II Totals | Delaware | Maryland | New Jersey | New York | Puerto Rico | Virgin Islands |
|----------------------------|------------------|----------|----------|------------|----------|-------------|----------------|
| Fatal Crashes | 6 | 1 | 1 | | 4 | | |
| Fatalities | 6 | 1 | 1 | | 4 | | |
| Fatalities W/Seat Belt | 2 | 0 | 1 | | 1 | | |
| DUI arrests | 392 | 44 | 81 | | 267 | | |
| Speeding Citations | 5501 | 460 | 1580 | | 3461 | | |
| Seat Belt Citations | 844 | 50 | 203 | | 591 | | |
| Seat Belt Warnings | 22 | 0 | 22 | | 0 | | |
| Child Restraint Citations | 36 | 5 | 8 | | 23 | | |
| Child Restraint Warnings | 1 | 0 | 1 | | 0 | | |
| Highway Collisions | 57 | 14 | 8 | | 35 | | |
| Alcohol Related Collisions | 785 | 103 | 166 | | 516 | | |
| Motorist Assists | 69 | 69 | 0 | | 0 | | |

Region III Statistics by State

| All American Buckle-up Week | Regional III Totals | District of Columbia | Pennsylvania | Virgina | West Virgina |
|-----------------------------|---------------------|----------------------|--------------|---------|--------------|
| Seat Belt Citations | 519 | | 519 | | |
| Child Restraint | 81 | | 81 | | |

| Memorial Day Weekend | Regional III Totals | District of Columbia | Pennsylvania | Virgina | West Virgina |
|----------------------------|---------------------|----------------------|--------------|---------|--------------|
| Fatal Crashes | 10 | | 10 | | |
| Fatalities | 11 | | 11 | | |
| Fatalities W/Seat Belt | 3 | | 3 | | |
| DUI arrests | 263 | | 263 | | |
| Speeding Citations | 6452 | | 6452 | | |
| Seat Belt Citations | 519 | | 519 | | |
| Seat Belt Warnings | 11266 | | 11266 | | |
| Child Restraint Citations | 81 | | 81 | | |
| Child Restraint Warnings | 0 | | 0 | | |
| Highway Collisions | 86 | | 86 | | |
| Alcohol Related Collisions | 807 | | 807 | | |
| Motorist Assists | 0 | | 0 | | |

| July 4th Weekend | Regional III Totals | District of Columbia | Pennsylvania | Virgina | West Virginia |
|----------------------------|---------------------|----------------------|--------------|---------|---------------|
| Fatal Crashes | 29 | | 8 | 21 | 4 |
| Fatalities | 25 | | 8 | 17 | 4 |
| Fatalities W/Seat Belt | 20 | | 6 | 14 | 2 |
| DUI arrests | 471 | | 319 | 152 | 60 |
| Speeding Citations | 16516 | | 5607 | 10909 | 1964 |
| Seat Belt Citations | 1568 | | 273 | 1295 | 173 |
| Seat Belt Warnings | 1179 | | 1179 | 0 | 148 |
| Child Restraint Citations | 409 | | 46 | 363 | 24 |
| Child Restraint Warnings | 0 | | 0 | 0 | 15 |
| Highway Collisions | 104 | | 104 | 0 | 15 |
| Alcohol Related Collisions | 1867 | | 934 | 933 | 65 |
| Motorist Assists | 4309 | | 0 | 4309 | 473 |

| Labor Day Weekend | Regional III Totals | District of Columbia | Pennsylvania | Virgina | West Virginia |
|----------------------------|---------------------|----------------------|--------------|---------|---------------|
| Fatal Crashes | 13 | | 4 | 9 | 4 |
| Fatalities | 16 | | 5 | 11 | 5 |
| Fatalities W/Seat Belt | 5 | | 2 | 3 | 3 |
| DUI arrests | 437 | | 336 | 101 | 59 |
| Speeding Citations | 12163 | | 5702 | 6461 | 1896 |
| Seat Belt Citations | 878 | | 241 | 637 | 179 |
| Seat Belt Warnings | 977 | | 977 | 0 | 233 |
| Child Restraint Citations | 203 | | 29 | 174 | 18 |
| Child Restraint Warnings | 0 | | 0 | 0 | 10 |
| Highway Collisions | 91 | | 91 | 0 | 16 |
| Alcohol Related Collisions | 1817 | | 870 | 947 | 48 |
| Motorist Assists | 3652 | | 0 | 3652 | 373 |

| Thanksgiving Holiday | Regional III Totals | District of Columbia | Pennsylvania | Virgina | West Virginia |
|----------------------------|---------------------|----------------------|--------------|---------|---------------|
| Fatal Crashes | 27 | | 11 | 16 | 2 |
| Fatalities | 27 | | 11 | 16 | 4 |
| Fatalities W/Seat Belt | 5 | | 1 | 4 | 3 |
| DUI arrests | 520 | | 369 | 151 | 36 |
| Speeding Citations | 14737 | | 6490 | 8247 | 2613 |
| Seat Belt Citations | 1185 | | 476 | 709 | 180 |
| Seat Belt Warnings | 13847 | | 13847 | 0 | 298 |
| Child Restraint Citations | 287 | | 63 | 224 | 10 |
| Child Restraint Warnings | 0 | | 0 | 0 | 9 |
| Highway Collisions | 103 | | 103 | 0 | 10 |
| Alcohol Related Collisions | 2224 | | 1066 | 1158 | 80 |
| Motorist Assists | 3748 | | 0 | 3748 | 528 |

| CARE Livesaver Weekend | Regional III Totals | District of Columbia | Pennsylvania | Virgina | West Virginia |
|----------------------------|---------------------|----------------------|--------------|---------|---------------|
| Fatal Crashes | 9 | | 6 | 3 | 1 |
| Fatalities | 9 | | 6 | 3 | 5 |
| Fatalities W/Seat Belt | 6 | | 4 | 2 | 2 |
| DUI arrests | 327 | | 216 | 111 | 48 |
| Speeding Citations | 6272 | | 2568 | 3704 | 1230 |
| Seat Belt Citations | 523 | | 128 | 395 | 140 |
| Seat Belt Warnings | 652 | | 652 | 0 | 285 |
| Child Restraint Citations | 92 | | 28 | 64 | 4 |
| Child Restraint Warnings | 40 | | 40 | 0 | 23 |
| Highway Collisions | 75 | | 75 | 0 | 8 |
| Alcohol Related Collisions | 862 | | 561 | 301 | 67 |
| Motorist Assists | 1181 | | 0 | 1181 | 333 |

Region IV Statistics by State

| All American Buckle-up Week | Regional IV Totals | Alabama | Florida | Georgia | Kentucky | Mississippi | N. Carolina | S. Carolina | Tennessee |
|-----------------------------|--------------------|---------|---------|---------|----------|-------------|-------------|-------------|-----------|
| Seat Belt Citations | 0 | | | | | | | | |
| Child Restraint | 0 | | | | | | | | |

| Memorial Day Weekend | Regional IV Totals | Alabama | Florida | Georgia | Kentucky | Mississippi | N. Carolina | S. Carolina | Tennessee |
|----------------------------|--------------------|---------|---------|---------|----------|-------------|-------------|-------------|-----------|
| Fatal Crashes | 0 | | | | | | | | |
| Fatalities | 0 | | | | | | | | |
| Fatalities W/Seat Belt | 0 | | | | | | | | |
| DUI arrests | 0 | | | | | | | | |
| Speeding Citations | 0 | | | | | | | | |
| Seat Belt Citations | 0 | | | | | | | | |
| Seat Belt Warnings | 0 | | | | | | | | |
| Child Restraint Citations | 0 | | | | | | | | |
| Child Restraint Warnings | 0 | | | | | | | | |
| Highway Collisions | 0 | | | | | | | | |
| Alcohol Related Collisions | 0 | | | | | | | | |
| Motorist Assists | 0 | | | | | | | | |

| July 4th Weekend | Regional IV Totals | Alabama | Florida | Georgia | Kentucky | Mississippi | N. Carolina | S. Carolina | Tennessee |
|----------------------------|--------------------|---------|---------|---------|----------|-------------|-------------|-------------|-----------|
| Fatal Crashes | 101 | 11 | 30 | 12 | 9 | 2 | 14 | 14 | 9 |
| Fatalities | 109 | 15 | 31 | 10 | 9 | 3 | 14 | 15 | 12 |
| Fatalities W/Seat Belt | 32 | 5 | 8 | 2 | 2 | 1 | 2 | 3 | 9 |
| DUI arrests | 1487 | 112 | 198 | 304 | 200 | 50 | 389 | 172 | 62 |
| Speeding Citations | 36911 | 2733 | 8424 | 7199 | 2530 | 3130 | 5931 | 4093 | 2871 |
| Seat Belt Citations | 10656 | 833 | 1457 | 2214 | 585 | 63 | 1964 | 2397 | 1143 |
| Seat Belt Warnings | 547 | 63 | 0 | 376 | 67 | 0 | 0 | 0 | 41 |
| Child Restraint Citations | 1021 | 53 | 90 | 203 | 55 | 25 | 292 | 141 | 162 |
| Child Restraint Warnings | 74 | 3 | 0 | 58 | 7 | 0 | 0 | 0 | 6 |
| Highway Collisions | 415 | 31 | 115 | 30 | 15 | 76 | 72 | 51 | 25 |
| Alcohol Related Collisions | 3870 | 404 | 1248 | 388 | 226 | 47 | 337 | 921 | 299 |
| Motorist Assists | 10030 | 402 | 4109 | 730 | 627 | 76 | 2147 | 1170 | 769 |

| Labor Day Weekend | Regional IV Totals | Alabama | Florida | Georgia | Kentucky | Mississippi | N. Carolina | S. Carolina | Tennessee |
|----------------------------|--------------------|---------|---------|---------|----------|-------------|-------------|-------------|-----------|
| Fatal Crashes | 50 | 8 | 16 | | 7 | 4 | 6 | | 9 |
| Fatalities | 52 | 9 | 16 | | 7 | 4 | 6 | | 10 |
| Fatalities W/Seat Belt | 13 | 0 | 1 | | 3 | 1 | 1 | | 7 |
| DUI arrests | 1131 | 81 | 197 | | 218 | 203 | 380 | | 52 |
| Speeding Citations | 31330 | 3191 | 8102 | | 3266 | 7626 | 6056 | | 3089 |
| Seat Belt Citations | 5307 | 1068 | 1362 | | 0 | 243 | 1817 | | 817 |
| Seat Belt Warnings | 685 | 47 | 0 | | 593 | 0 | 0 | | 45 |
| Child Restraint Citations | 660 | 81 | 98 | | 40 | 100 | 199 | | 142 |
| Child Restraint Warnings | 14 | 9 | 0 | | 0 | 0 | 0 | | 5 |
| Highway Collisions | 240 | 29 | 102 | | 0 | 5 | 81 | | 23 |
| Alcohol Related Collisions | 2734 | 315 | 1615 | | 182 | 129 | 326 | | 167 |
| Motorist Assists | 7037 | 389 | 3640 | | 487 | 0 | 1933 | | 588 |

| Thanksgiving Holiday | Regional IV Totals | Alabama | Florida | Georgia | Kentucky | Mississippi | N. Carolina | S. Carolina | Tennessee |
|----------------------------|--------------------|---------|---------|---------|----------|-------------|-------------|-------------|-----------|
| Fatal Crashes | 76 | 9 | 19 | 10 | 10 | 3 | 14 | 8 | 3 |
| Fatalities | 82 | 10 | 22 | 11 | 10 | 4 | 13 | 9 | 3 |
| Fatalities W/Seat Belt | 19 | 1 | 3 | 1 | 2 | 1 | 6 | 3 | 2 |
| DUI arrests | 1462 | 75 | 141 | 259 | 258 | 113 | 405 | 148 | 63 |
| Speeding Citations | 56884 | 3048 | 11008 | 13153 | 5068 | 7692 | 9565 | 4427 | 2923 |
| Seat Belt Citations | 8634 | 721 | 1506 | 2270 | 0 | 418 | 1554 | 1481 | 684 |
| Seat Belt Warnings | 1204 | 45 | 3 | 357 | 774 | 0 | 0 | 0 | 25 |
| Child Restraint Citations | 4016 | 44 | 67 | 173 | 52 | 94 | 3430 | 76 | 80 |
| Child Restraint Warnings | 55 | 10 | 0 | 43 | 0 | 0 | 0 | 0 | 2 |
| Highway Collisions | 356 | 38 | 79 | 37 | 18 | 2 | 102 | 51 | 29 |
| Alcohol Related Collisions | 5258 | 479 | 2072 | 504 | 255 | 187 | 531 | 835 | 395 |
| Motorist Assists | 10912 | 332 | 4290 | 930 | 553 | 0 | 2736 | 1179 | 892 |

| CARE Lifesaver Weekend | Regional IV Totals | Alabama | Florida | Georgia | Kentucky | Mississippi | N. Carolina | S. Carolina | Tennessee |
|----------------------------|--------------------|---------|---------|---------|----------|-------------|-------------|-------------|-----------|
| Fatal Crashes | 50 | 6 | 14 | 7 | 6 | 5 | 6 | 2 | 4 |
| Fatalities | 53 | 6 | 14 | 7 | 6 | 7 | 7 | 2 | 4 |
| Fatalities W/Seat Belt | 21 | 3 | 4 | 1 | 1 | 5 | 4 | 1 | 2 |
| DUI arrests | 894 | 71 | 158 | 128 | 106 | 54 | 258 | 88 | 31 |
| Speeding Citations | 16918 | 1504 | 3905 | 1675 | 1040 | 1746 | 4377 | 1222 | 1449 |
| Seat Belt Citations | 3594 | 473 | 798 | 322 | 0 | 86 | 1012 | 495 | 408 |
| Seat Belt Warnings | 518 | 9 | 0 | 91 | 410 | 0 | 0 | 0 | 8 |
| Child Restraint Citations | 313 | 25 | 32 | 39 | 19 | 16 | 125 | 24 | 33 |
| Child Restraint Warnings | 16 | 1 | 0 | 11 | 0 | 4 | 0 | 0 | 0 |
| Highway Collisions | 266 | 39 | 76 | 27 | 14 | 5 | 55 | 35 | 15 |
| Alcohol Related Collisions | 3255 | 349 | 1152 | 332 | 143 | 130 | 308 | 617 | 224 |
| Motorist Assists | 5143 | 205 | 2051 | 81 | 261 | 148 | 1515 | 393 | 489 |

Region V Statistics by State

| All American Buckle-up Week | Regional V Totals | Illinois | Indiana 12186 | Michigan | Minnesota | Ohio | O.P.P | R.C.M.P. | Wisconsin |
|-----------------------------|-------------------|----------|---------------|----------|-----------|------|-------|----------|-----------|
| Seat Belt Citations | 0 | | | | | | | | |
| Child Restraint | 0 | | | | | | | | |

| Memorial Day Weekend | Regional V Totals | Illinois | Indiana 10036 | Michigan | Minnesota | Ohio | O.P.P | R.C.M.P. | Wisconsin |
|----------------------------|-------------------|----------|---------------|----------|-----------|------|-------|----------|-----------|
| Fatal Crashes | 0 | | | | | | | | |
| Fatalities | 0 | | | | | | | | |
| Fatalities W/Seat Belt | 0 | | | | | | | | |
| DUI arrests | 0 | | | | | | | | |
| Speeding Citations | 0 | | | | | | | | |
| Seat Belt Citations | 0 | | | | | | | | |
| Seat Belt Warnings | 0 | | | | | | | | |
| Child Restraint Citations | 0 | | | | | | | | |
| Child Restraint Warnings | 0 | | | | | | | | |
| Highway Collisions | 0 | | | | | | | | |
| Alcohol Related Collisions | 0 | | | | | | | | |
| Motorist Assists | 0 | | | | | | | | |

| July 4th Weekend | Regional V Totals | Illinois | Indiana | Michigan | Minnesota | Ohio | O.P.P | R.C.M.P. | Wisconsin |
|----------------------------|-------------------|----------|---------|----------|-----------|-------|-------|----------|-----------|
| Fatal Crashes | 31 | 3 | 4 | 5 | 3 | 15 | | | 1 |
| Fatalities | 33 | 3 | 4 | 6 | 3 | 16 | | | 1 |
| Fatalities W/Seat Belt | 8 | 1 | 0 | 2 | 0 | 5 | | | 0 |
| DUI arrests | 1401 | 147 | 13 | 165 | 209 | 834 | | | 33 |
| Speeding Citations | 31546 | 3302 | 1595 | 6246 | 2393 | 17143 | | | 867 |
| Seat Belt Citations | 9506 | 1835 | 258 | 658 | 197 | 6383 | | | 175 |
| Seat Belt Warnings | 402 | 0 | 0 | 118 | 214 | 37 | | | 33 |
| Child Restraint Citations | 523 | 224 | 18 | 0 | 14 | 59 | | | 208 |
| Child Restraint Warnings | 30 | 0 | 0 | 0 | 3 | 22 | | | 5 |
| Highway Collisions | 116 | 22 | 0 | 0 | 0 | 83 | | | 11 |
| Alcohol Related Collisions | 2250 | 488 | 118 | 277 | 229 | 1110 | | | 28 |
| Motorist Assists | 13939 | 1912 | 301 | 859 | 953 | 9477 | | | 437 |

| Labor Day Weekend | Regional V Totals | Illinois | Indiana | Michigan | Minnesota | Ohio | O.P.P | R.C.M.P. | Wisconsin |
|----------------------------|-------------------|----------|---------|----------|-----------|-------|-------|----------|-----------|
| Fatal Crashes | 29 | 3 | 1 | 4 | | 13 | 4 | | 4 |
| Fatalities | 32 | 3 | 1 | 4 | | 15 | 5 | | 4 |
| Fatalities W/Seat Belt | 11 | 2 | 0 | 0 | | 3 | 4 | | 2 |
| DUI arrests | 1123 | 130 | 19 | 212 | | 701 | 0 | | 61 |
| Speeding Citations | 31858 | 3126 | 1779 | 5775 | | 15163 | 4284 | | 1731 |
| Seat Belt Citations | 7721 | 1488 | 263 | 546 | | 4666 | 331 | | 427 |
| Seat Belt Warnings | 171 | 0 | 0 | 93 | | 48 | 0 | | 30 |
| Child Restraint Citations | 214 | 100 | 5 | 0 | | 93 | 0 | | 16 |
| Child Restraint Warnings | 13 | 0 | 0 | 0 | | 1 | 0 | | 12 |
| Highway Collisions | 93 | 30 | 11 | 0 | | 49 | 0 | | 3 |
| Alcohol Related Collisions | 1589 | 398 | 65 | 299 | | 777 | 0 | | 50 |
| Motorist Assists | 9751 | 1361 | 296 | 835 | | 6594 | 0 | | 665 |

| Thanksgiving Holiday | Regional V Totals | Illinois | Indiana | Michigan | Minnesota | Ohio | O.P.P | R.C.M.P. | Wisconsin |
|----------------------------|-------------------|----------|---------|----------|-----------|------|-------|----------|-----------|
| Fatal Crashes | 34 | 3 | 1 | 14 | 2 | 14 | | | 0 |
| Fatalities | 39 | 5 | 1 | 16 | 2 | 15 | | | 0 |
| Fatalities W/Seat Belt | 18 | 3 | 1 | 10 | 0 | 4 | | | 0 |
| DUI arrests | 1071 | 128 | 19 | 168 | 191 | 530 | | | 35 |
| Speeding Citations | 23533 | 5717 | 2225 | 4475 | 2172 | 7754 | | | 1190 |
| Seat Belt Citations | 6402 | 3363 | 155 | 380 | 224 | 1946 | | | 334 |
| Seat Belt Warnings | 276 | 0 | 0 | 80 | 136 | 32 | | | 28 |
| Child Restraint Citations | 262 | 194 | 9 | 0 | 13 | 41 | | | 5 |
| Child Restraint Warnings | 42 | 0 | 0 | 0 | 1 | 30 | | | 11 |
| Highway Collisions | 77 | 20 | 1 | 0 | 0 | 55 | | | 1 |
| Alcohol Related Collisions | 3514 | 578 | 197 | 314 | 254 | 2114 | | | 57 |
| Motorist Assists | 9508 | 1609 | 56 | 763 | 1037 | 5625 | | | 418 |

| CARE Lifesaver Weekend | Regional V Totals | Illinois | Indiana | Michigan | Minnesota | Ohio | O.P.P | R.C.M.P. | Wisconsin |
|----------------------------|-------------------|----------|---------|----------|-----------|------|-------|----------|-----------|
| Fatal Crashes | 15 | 2 | 0 | 5 | 1 | 7 | | | 0 |
| Fatalities | 16 | 2 | 0 | 5 | 1 | 8 | | | 0 |
| Fatalities W/Seat Belt | 5 | 0 | 0 | 2 | 0 | 3 | | | 0 |
| DUI arrests | 799 | 31 | 47 | 80 | 120 | 386 | | | 135 |
| Speeding Citations | 9038 | 1171 | 1083 | 2644 | 686 | 2815 | | | 639 |
| Seat Belt Citations | 1968 | 343 | 135 | 119 | 62 | 912 | | | 397 |
| Seat Belt Warnings | 115 | 0 | 0 | 30 | 71 | 14 | | | 0 |
| Child Restraint Citations | 41 | 13 | 6 | 0 | 4 | 9 | | | 9 |
| Child Restraint Warnings | 21 | 0 | 0 | 0 | 2 | 19 | | | 0 |
| Highway Collisions | 36 | 3 | 5 | 0 | 0 | 28 | | | 0 |
| Alcohol Related Collisions | 856 | 130 | 107 | 184 | 176 | 259 | | | 0 |
| Motorist Assists | 4013 | 248 | 42 | 363 | 491 | 2869 | | | 0 |

Region VI Statistics by State

| All American Buckle-up Week | Regional VI Totals | Arkansas | Louisiana | New Mexico | Oklahoma | Texas |
|-----------------------------|--------------------|----------|-----------|------------|----------|-------|
| Seat Belt Citations | 3242 | | | | 2579 | 663 |
| Child Restraint | 162 | | | | 46 | 116 |

| Memorial Day Weekend | Regional VI Totals | Arkansas | Louisiana | New Mexico | Oklahoma | Texas |
|----------------------------|--------------------|----------|-----------|------------|----------|-------|
| Fatal Crashes | 34 | | | | 10 | 24 |
| Fatalities | 38 | | | | 12 | 26 |
| Fatalities W/Seat Belt | 21 | | | | 6 | 15 |
| DUI arrests | 1061 | | | | 159 | 902 |
| Speeding Citations | 16392 | | | | 1489 | 14903 |
| Seat Belt Citations | 8111 | | | | 2546 | 5565 |
| Seat Belt Warnings | 10 | | | | 0 | 10 |
| Child Restraint Citations | 701 | | | | 38 | 663 |
| Child Restraint Warnings | 6 | | | | 0 | 6 |
| Highway Collisions | 154 | | | | 38 | 116 |
| Alcohol Related Collisions | 1215 | | | | 209 | 1006 |
| Motorist Assists | 2464 | | | | 1082 | 1382 |

| July 4th Weekend | Regional VI Totals | Arkansas | Louisiana | New Mexico | Oklahoma | Texas |
|----------------------------|--------------------|----------|-----------|------------|----------|-------|
| Fatal Crashes | 38 | | 4 | | 12 | 22 |
| Fatalities | 45 | | 4 | | 16 | 25 |
| Fatalities W/Seat Belt | 22 | | 1 | | 8 | 13 |
| DUI arrests | 1124 | | 132 | | 108 | 884 |
| Speeding Citations | 17889 | | 867 | | 1825 | 15197 |
| Seat Belt Citations | 4463 | | 79 | | 894 | 3490 |
| Seat Belt Warnings | 755 | | 753 | | 0 | 2 |
| Child Restraint Citations | 836 | | 46 | | 37 | 753 |
| Child Restraint Warnings | 20 | | 17 | | 0 | 3 |
| Highway Collisions | 174 | | 19 | | 27 | 128 |
| Alcohol Related Collisions | 1287 | | 122 | | 273 | 892 |
| Motorist Assists | 3859 | | 1336 | | 1242 | 1281 |

| Labor Day Weekend | Regional VI Totals | Arkansas | Louisiana | New Mexico | Oklahoma | Texas |
|----------------------------|--------------------|----------|-----------|------------|----------|-------|
| Fatal Crashes | 29 | | 5 | 0 | 4 | 20 |
| Fatalities | 48 | | 10 | 0 | 9 | 29 |
| Fatalities W/Seat Belt | 28 | | 4 | 0 | 7 | 17 |
| DUI arrests | 1208 | | 102 | 71 | 92 | 943 |
| Speeding Citations | 21080 | | 1245 | 1331 | 1346 | 17158 |
| Seat Belt Citations | 4892 | | 567 | 163 | 618 | 3544 |
| Seat Belt Warnings | 185 | | 154 | 17 | 0 | 14 |
| Child Restraint Citations | 715 | | 33 | 44 | 38 | 600 |
| Child Restraint Warnings | 25 | | 18 | 2 | 0 | 5 |
| Highway Collisions | 184 | | 30 | 5 | 18 | 131 |
| Alcohol Related Collisions | 1287 | | 298 | 58 | 214 | 717 |
| Motorist Assists | 3373 | | 1189 | 186 | 500 | 1498 |

| Thanksgiving Holiday | Regional VI Totals | Arkansas | Louisiana | New Mexico | Oklahoma | Texas |
|----------------------------|--------------------|----------|-----------|------------|----------|-------|
| Fatal Crashes | 48 | | 10 | 4 | 4 | 30 |
| Fatalities | 70 | | 20 | 5 | 5 | 40 |
| Fatalities W/Seat Belt | 29 | | 4 | 0 | 1 | 24 |
| DUI arrests | 971 | | 142 | 97 | 87 | 645 |
| Speeding Citations | 23945 | | 1888 | 2551 | 1700 | 17806 |
| Seat Belt Citations | 3715 | | 651 | 137 | 488 | 2439 |
| Seat Belt Warnings | 167 | | 139 | 16 | 0 | 12 |
| Child Restraint Citations | 573 | | 49 | 74 | 23 | 427 |
| Child Restraint Warnings | 24 | | 23 | 1 | 0 | 0 |
| Highway Collisions | 209 | | 44 | 14 | 27 | 124 |
| Alcohol Related Collisions | 1786 | | 383 | 84 | 243 | 1076 |
| Motorist Assists | 3779 | | 1758 | 224 | 578 | 1219 |

| CARE Lifesaver Weekend | Regional VI Totals | Arkansas | Louisiana | New Mexico | Oklahoma | Texas |
|----------------------------|--------------------|----------|-----------|------------|----------|-------|
| Fatal Crashes | 22 | | 7 | 2 | 4 | 9 |
| Fatalities | 25 | | 8 | 2 | 5 | 10 |
| Fatalities W/Seat Belt | 13 | | 4 | 1 | 3 | 5 |
| DUI arrests | 745 | | 111 | 41 | 47 | 546 |
| Speeding Citations | 9367 | | 937 | 690 | 766 | 6974 |
| Seat Belt Citations | 2063 | | 447 | 93 | 315 | 1208 |
| Seat Belt Warnings | 55 | | 48 | 6 | 0 | 1 |
| Child Restraint Citations | 253 | | 16 | 24 | 17 | 196 |
| Child Restraint Warnings | 9 | | 7 | 1 | 0 | 1 |
| Highway Collisions | 156 | | 30 | 7 | 13 | 106 |
| Alcohol Related Collisions | 1060 | | 215 | 58 | 122 | 665 |
| Motorist Assists | 1723 | | 809 | 90 | 272 | 552 |

Region VII Statistics by State

| All American Buckle-up Week | Regional VII Totals | Iowa | Kansas | Missouri | Nebraska |
|-----------------------------|---------------------|------|--------|----------|----------|
| Seat Belt Citations | 0 | | | | |
| Child Restraint | 0 | | | | |

| Memorial Day Weekend | Regional VII Totals | Iowa | Kansas | Missouri | Nebraska |
|----------------------------|---------------------|------|--------|----------|----------|
| Fatal Crashes | 0 | | | | |
| Fatalities | 0 | | | | |
| Fatalities W/Seat Belt | 0 | | | | |
| DUI arrests | 0 | | | | |
| Speeding Citations | 0 | | | | |
| Seat Belt Citations | 0 | | | | |
| Seat Belt Warnings | 0 | | | | |
| Child Restraint Citations | 0 | | | | |
| Child Restraint Warnings | 0 | | | | |
| Highway Collisions | 0 | | | | |
| Alcohol Related Collisions | 0 | | | | |
| Motorist Assists | 0 | | | | |

| July 4th Weekend | Regional VII Totals | Iowa | Kansas | Missouri | Nebraska |
|----------------------------|---------------------|------|--------|----------|----------|
| Fatal Crashes | 19 | 4 | 2 | 9 | 4 |
| Fatalities | 19 | 4 | 2 | 9 | 4 |
| Fatalities W/Seat Belt | 9 | 3 | 0 | 2 | 4 |
| DUI arrests | 316 | 34 | 48 | 185 | 49 |
| Speeding Citations | 9678 | 2973 | 1959 | 3526 | 1220 |
| Seat Belt Citations | 1906 | 530 | 340 | 980 | 56 |
| Seat Belt Warnings | 288 | 78 | 100 | 0 | 110 |
| Child Restraint Citations | 174 | 12 | 106 | 40 | 16 |
| Child Restraint Warnings | 40 | 4 | 10 | 0 | 26 |
| Highway Collisions | 76 | 3 | 9 | 57 | 7 |
| Alcohol Related Collisions | 264 | 27 | 0 | 202 | 35 |
| Motorist Assists | 2568 | 311 | 0 | 1929 | 328 |

| Labor Day Weekend | Regional VII Totals | Iowa | Kansas | Missouri | Nebraska |
|----------------------------|---------------------|------|--------|----------|----------|
| Fatal Crashes | 15 | 3 | | 11 | 1 |
| Fatalities | 17 | 4 | | 12 | 1 |
| Fatalities W/Seat Belt | 11 | 3 | | 7 | 1 |
| DUI arrests | 257 | 36 | | 186 | 35 |
| Speeding Citations | 5874 | 1632 | | 3356 | 886 |
| Seat Belt Citations | 1395 | 450 | | 933 | 12 |
| Seat Belt Warnings | 200 | 99 | | 0 | 101 |
| Child Restraint Citations | 62 | 13 | | 33 | 16 |
| Child Restraint Warnings | 10 | 0 | | 0 | 10 |
| Highway Collisions | 47 | 0 | | 47 | 0 |
| Alcohol Related Collisions | 213 | 23 | | 176 | 14 |
| Motorist Assists | 1996 | 143 | | 1621 | 232 |

| Thanksgiving Holiday | Regional VII Totals | Iowa | Kansas | Missouri | Nebraska |
|----------------------------|---------------------|------|--------|----------|----------|
| Fatal Crashes | 14 | 3 | | 10 | 1 |
| Fatalities | 19 | 3 | | 11 | 5 |
| Fatalities W/Seat Belt | 6 | 0 | | 5 | 1 |
| DUI arrests | 236 | 22 | | 174 | 40 |
| Speeding Citations | 8454 | 2398 | | 4433 | 1623 |
| Seat Belt Citations | 1560 | 325 | | 1190 | 45 |
| Seat Belt Warnings | 159 | 49 | | 0 | 110 |
| Child Restraint Citations | 87 | 32 | | 39 | 16 |
| Child Restraint Warnings | 25 | 4 | | 0 | 21 |
| Highway Collisions | 56 | 5 | | 51 | 0 |
| Alcohol Related Collisions | 388 | 51 | | 285 | 52 |
| Motorist Assists | 2512 | 267 | | 2010 | 235 |

| CARE Lifesaver Weekend | Regional VII Totals | Iowa | Kansas | Missouri | Nebraska |
|----------------------------|---------------------|------|--------|----------|----------|
| Fatal Crashes | 6 | 1 | | 5 | 0 |
| Fatalities | 6 | 1 | | 5 | 0 |
| Fatalities W/Seat Belt | 1 | 0 | | 1 | 0 |
| DUI arrests | 181 | 25 | | 142 | 14 |
| Speeding Citations | 3110 | 1154 | | 1567 | 389 |
| Seat Belt Citations | 885 | 224 | | 648 | 13 |
| Seat Belt Warnings | 103 | 53 | | 0 | 50 |
| Child Restraint Citations | 49 | 19 | | 29 | 1 |
| Child Restraint Warnings | 0 | 0 | | 0 | 0 |
| Highway Collisions | 47 | 1 | | 42 | 4 |
| Alcohol Related Collisions | 183 | 14 | | 155 | 14 |
| Motorist Assists | 1200 | 156 | | 960 | 84 |

Region VIII Statistics by State

| All American Buckle-up Week | Regional VII Totals | Colorado | Montana | N. Dakota | S. Dakota | Utah | Wyoming |
|-----------------------------|---------------------|----------|---------|-----------|-----------|------|---------|
| Seat Belt Citations | 6202 | 4300 | 364 | 281 | 333 | 890 | 34 |
| Child Restraint | 584 | 434 | 9 | 46 | 26 | 60 | 9 |

| Memorial Day Weekend | Regional VII Totals | Colorado | Montana | N. Dakota | S. Dakota | Utah | Wyoming |
|----------------------------|---------------------|----------|---------|-----------|-----------|------|---------|
| Fatal Crashes | 25 | 12 | 6 | 3 | 2 | 2 | 0 |
| Fatalities | 25 | 12 | 6 | 3 | 2 | 2 | 0 |
| Fatalities W/Seat Belt | 11 | 9 | 1 | 0 | 0 | 1 | 0 |
| DUI arrests | 674 | 386 | 57 | 39 | 81 | 89 | 22 |
| Speeding Citations | 13339 | 7394 | 1204 | 863 | 677 | 1533 | 1668 |
| Seat Belt Citations | 5901 | 4300 | 364 | 281 | 195 | 680 | 81 |
| Seat Belt Warnings | 312 | 98 | 48 | 9 | 16 | 103 | 38 |
| Child Restraint Citations | 570 | 434 | 9 | 46 | 22 | 33 | 26 |
| Child Restraint Warnings | 131 | 56 | 11 | 0 | 6 | 30 | 28 |
| Highway Collisions | 127 | 74 | 24 | 6 | 6 | 13 | 4 |
| Alcohol Related Collisions | 923 | 530 | 163 | 43 | 28 | 159 | 0 |
| Motorist Assists | 11074 | 9513 | 341 | 76 | 156 | 833 | 155 |

| July 4th Weekend | Regional VII Totals | Colorado | Montana | N. Dakota | S. Dakota | Utah | Wyoming |
|----------------------------|---------------------|----------|---------|-----------|-----------|------|---------|
| Fatal Crashes | 13 | 7 | | 0 | 3 | 0 | 3 |
| Fatalities | 14 | 8 | | 0 | 2 | 0 | 4 |
| Fatalities W/Seat Belt | 6 | 3 | | 0 | 0 | 0 | 3 |
| DUI arrests | 400 | 168 | | 41 | 87 | 58 | 46 |
| Speeding Citations | 7005 | 1608 | | 919 | 1083 | 1581 | 1814 |
| Seat Belt Citations | 970 | 375 | | 183 | 196 | 113 | 103 |
| Seat Belt Warnings | 162 | 41 | | 12 | 28 | 42 | 39 |
| Child Restraint Citations | 172 | 38 | | 32 | 40 | 25 | 37 |
| Child Restraint Warnings | 65 | 10 | | 1 | 4 | 8 | 42 |
| Highway Collisions | 72 | 51 | | 1 | 5 | 12 | 3 |
| Alcohol Related Collisions | 564 | 316 | | 34 | 37 | 177 | 0 |
| Motorist Assists | 2975 | 1383 | | 112 | 268 | 1044 | 168 |

| Labor Day Weekend | Regional VII Totals | Colorado | Montana | N. Dakota | S. Dakota | Utah | Wyoming |
|----------------------------|---------------------|----------|---------|-----------|-----------|------|---------|
| Fatal Crashes | 19 | 3 | 5 | 3 | 1 | 4 | 3 |
| Fatalities | 21 | 3 | 7 | 3 | 1 | 4 | 3 |
| Fatalities W/Seat Belt | 10 | 2 | 5 | 0 | 0 | 2 | 1 |
| DUI arrests | 393 | 190 | 39 | 21 | 55 | 68 | 20 |
| Speeding Citations | 6878 | 2037 | 823 | 740 | 551 | 1579 | 1148 |
| Seat Belt Citations | 1168 | 543 | 187 | 131 | 140 | 116 | 51 |
| Seat Belt Warnings | 120 | 26 | 34 | 4 | 9 | 26 | 21 |
| Child Restraint Citations | 127 | 61 | 2 | 17 | 19 | 17 | 11 |
| Child Restraint Warnings | 79 | 56 | 3 | 0 | 2 | 9 | 9 |
| Highway Collisions | 81 | 37 | 24 | 4 | 0 | 5 | 11 |
| Alcohol Related Collisions | 575 | 280 | 103 | 29 | 25 | 101 | 37 |
| Motorist Assists | 2856 | 1400 | 132 | 64 | 171 | 941 | 148 |

| Thanksgiving Holiday | Regional VII Totals | Colorado | Montana | N. Dakota | S. Dakota | Utah | Wyoming |
|----------------------------|---------------------|----------|---------|-----------|-----------|------|---------|
| Fatal Crashes | 18 | 3 | 3 | 2 | 2 | 6 | 2 |
| Fatalities | 21 | 4 | 3 | 2 | 2 | 8 | 2 |
| Fatalities W/Seat Belt | 9 | 2 | 3 | 0 | 0 | 4 | 0 |
| DUI arrests | 341 | 150 | 36 | 24 | 61 | 52 | 18 |
| Speeding Citations | 7134 | 1946 | 780 | 1250 | 593 | 1664 | 901 |
| Seat Belt Citations | 1132 | 375 | 177 | 221 | 119 | 118 | 122 |
| Seat Belt Warnings | 129 | 17 | 39 | 9 | 22 | 12 | 30 |
| Child Restraint Citations | 172 | 88 | 7 | 27 | 25 | 9 | 16 |
| Child Restraint Warnings | 58 | 19 | 6 | 4 | 5 | 9 | 15 |
| Highway Collisions | 74 | 31 | 21 | 4 | 4 | 8 | 6 |
| Alcohol Related Collisions | 583 | 294 | 0 | 74 | 68 | 147 | 0 |
| Motorist Assists | 2165 | 899 | 183 | 88 | 158 | 754 | 83 |

| CARE Lifesaver Weekend | Regional VII Totals | Colorado | Montana | N. Dakota | S. Dakota | Utah | Wyoming |
|----------------------------|---------------------|----------|---------|-----------|-----------|------|---------|
| Fatal Crashes | 1 | 1 | 0 | 0 | 0 | 0 | |
| Fatalities | 1 | 1 | 0 | 0 | 0 | 0 | |
| Fatalities W/Seat Belt | 0 | 0 | 0 | 0 | 0 | 0 | |
| DUI arrests | 247 | 115 | 27 | 20 | 44 | 41 | |
| Speeding Citations | 2221 | 778 | 297 | 437 | 252 | 457 | |
| Seat Belt Citations | 518 | 218 | 87 | 77 | 51 | 85 | |
| Seat Belt Warnings | 69 | 15 | 16 | 1 | 12 | 25 | |
| Child Restraint Citations | 42 | 24 | 5 | 5 | 5 | 3 | |
| Child Restraint Warnings | 17 | 8 | 1 | 0 | 1 | 7 | |
| Highway Collisions | 51 | 32 | 10 | 3 | 3 | 3 | |
| Alcohol Related Collisions | 565 | 200 | 73 | 29 | 13 | 250 | |
| Motorist Assists | 1235 | 549 | 78 | 47 | 120 | 441 | |

Region IX Statistics by State

| All American Buckle-up Week | Regional IX Totals | American Samoa | Arizona | California | Guam | Hawaii | Nevada |
|-----------------------------|--------------------|----------------|---------|------------|------|--------|--------|
| Seat Belt Citations | 571 | | 571 | | | | |
| Child Restraint | 93 | | 93 | | | | |

| Memorial Day Weekend | Regional IX Totals | American Samoa | Arizona | California | Guam | Hawaii | Nevada |
|----------------------------|--------------------|----------------|---------|------------|------|--------|--------|
| Fatal Crashes | 5 | | 5 | | | | |
| Fatalities | 5 | | 5 | | | | |
| Fatalities W/Seat Belt | 2 | | 2 | | | | |
| DUI arrests | 111 | | 111 | | | | |
| Speeding Citations | 2754 | | 2754 | | | | |
| Seat Belt Citations | 546 | | 546 | | | | |
| Seat Belt Warnings | 24 | | 24 | | | | |
| Child Restraint Citations | 0 | | 0 | | | | |
| Child Restraint Warnings | 9 | | 9 | | | | |
| Highway Collisions | 7 | | 7 | | | | |
| Alcohol Related Collisions | 218 | | 218 | | | | |
| Motorist Assists | 1727 | | 1727 | | | | |

| July 4th Weekend | Regional IX Totals | American Samoa | Arizona | California | Guam | Hawaii | Nevada |
|----------------------------|--------------------|----------------|---------|------------|------|--------|--------|
| Fatal Crashes | 35 | | 5 | 30 | | | 0 |
| Fatalities | 43 | | 5 | 38 | | | 0 |
| Fatalities W/Seat Belt | 19 | | 0 | 19 | | | 0 |
| DUI arrests | 2160 | | 104 | 1983 | | | 73 |
| Speeding Citations | 28259 | | 2286 | 24256 | | | 1717 |
| Seat Belt Citations | 5803 | | 402 | 5196 | | | 205 |
| Seat Belt Warnings | 80 | | 35 | 0 | | | 45 |
| Child Restraint Citations | 662 | | 63 | 565 | | | 34 |
| Child Restraint Warnings | 14 | | 5 | 0 | | | 9 |
| Highway Collisions | 31 | | 16 | 0 | | | 15 |
| Alcohol Related Collisions | 662 | | 291 | 211 | | | 160 |
| Motorist Assists | 2613 | | 1685 | 0 | | | 928 |

| Labor Day Weekend | Regional IX Totals | American Samoa | Arizona | California | Guam | Hawaii | Nevada |
|----------------------------|--------------------|----------------|---------|------------|------|--------|--------|
| Fatal Crashes | 4 | | 2 | | | | 2 |
| Fatalities | 7 | | 5 | | | | 2 |
| Fatalities W/Seat Belt | 3 | | 2 | | | | 1 |
| DUI arrests | 274 | | 167 | | | | 107 |
| Speeding Citations | 5485 | | 3669 | | | | 1816 |
| Seat Belt Citations | 846 | | 463 | | | | 383 |
| Seat Belt Warnings | 126 | | 32 | | | | 94 |
| Child Restraint Citations | 111 | | 74 | | | | 37 |
| Child Restraint Warnings | 18 | | 5 | | | | 13 |
| Highway Collisions | 38 | | 22 | | | | 16 |
| Alcohol Related Collisions | 452 | | 278 | | | | 174 |
| Motorist Assists | 2743 | | 1869 | | | | 874 |

| Thanksgiving Holiday | Regional IX Totals | American Samoa | Arizona | California | Guam | Hawaii | Nevada |
|----------------------------|--------------------|----------------|---------|------------|------|--------|--------|
| Fatal Crashes | 27 | | 6 | 20 | | | 1 |
| Fatalities | 31 | | 7 | 22 | | | 2 |
| Fatalities W/Seat Belt | 15 | | 3 | 12 | | | 0 |
| DUI arrests | 19554 | | 90 | 19405 | | | 59 |
| Speeding Citations | 7222 | | 3137 | 1871 | | | 2214 |
| Seat Belt Citations | 677 | | 299 | 0 | | | 378 |
| Seat Belt Warnings | 324 | | 27 | 277 | | | 20 |
| Child Restraint Citations | 108 | | 69 | 0 | | | 39 |
| Child Restraint Warnings | 9 | | 6 | 0 | | | 3 |
| Highway Collisions | 227 | | 12 | 200 | | | 15 |
| Alcohol Related Collisions | 565 | | 355 | 0 | | | 210 |
| Motorist Assists | 8803 | | 7846 | 0 | | | 957 |

| CARE Lifesaver Weekend | Regional IX Totals | American Samoa | Arizona | California | Guam | Hawaii | Nevada |
|----------------------------|--------------------|----------------|---------|------------|------|--------|--------|
| Fatal Crashes | 6 | | 4 | | | | 2 |
| Fatalities | 8 | | 6 | | | | 2 |
| Fatalities W/Seat Belt | 4 | | 3 | | | | 1 |
| DUI arrests | 167 | | 118 | | | | 49 |
| Speeding Citations | 1890 | | 1247 | | | | 643 |
| Seat Belt Citations | 380 | | 209 | | | | 171 |
| Seat Belt Warnings | 16 | | 13 | | | | 3 |
| Child Restraint Citations | 60 | | 46 | | | | 14 |
| Child Restraint Warnings | 4 | | 4 | | | | 0 |
| Highway Collisions | 43 | | 29 | | | | 14 |
| Alcohol Related Collisions | 443 | | 248 | | | | 195 |
| Motorist Assists | 1280 | | 824 | | | | 456 |

Region X Statistics by State

| All American Buckle-up Week | Regional X Totals | Alaska | Idaho | Oregon | Washington |
|-----------------------------|-------------------|--------|-------|--------|------------|
| Seat Belt Citations | 0 | | | | |
| Child Restraint | 0 | | | | |

| Memorial Day Weekend | Regional X Totals | Alaska | Idaho | Oregon | Washington |
|----------------------------|-------------------|--------|-------|--------|------------|
| Fatal Crashes | 0 | | | | |
| Fatalities | 0 | | | | |
| Fatalities W/Seat Belt | 0 | | | | |
| DUI arrests | 0 | | | | |
| Speeding Citations | 0 | | | | |
| Seat Belt Citations | 0 | | | | |
| Seat Belt Warnings | 0 | | | | |
| Child Restraint Citations | 0 | | | | |
| Child Restraint Warnings | 0 | | | | |
| Highway Collisions | 0 | | | | |
| Alcohol Related Collisions | 0 | | | | |
| Motorist Assists | 0 | | | | |

| July 4th Weekend | Regional X Totals | Alaska | Idaho | Oregon | Washington |
|----------------------------|-------------------|--------|-------|--------|------------|
| Fatal Crashes | 18 | 0 | | 10 | 8 |
| Fatalities | 21 | 0 | | 10 | 11 |
| Fatalities W/Seat Belt | 9 | 0 | | 2 | 7 |
| DUI arrests | 389 | 32 | | 81 | 276 |
| Speeding Citations | 6884 | 302 | | 1340 | 5242 |
| Seat Belt Citations | 785 | 31 | | 75 | 679 |
| Seat Belt Warnings | 452 | 253 | | 75 | 124 |
| Child Restraint Citations | 61 | 1 | | 10 | 50 |
| Child Restraint Warnings | 24 | 0 | | 4 | 20 |
| Highway Collisions | 41 | 1 | | 0 | 40 |
| Alcohol Related Collisions | 370 | 11 | | 144 | 215 |
| Motorist Assists | 2788 | 45 | | 618 | 2125 |

| Labor Day Weekend | Regional X Totals | Alaska | Idaho | Oregon | Washington |
|----------------------------|-------------------|--------|-------|--------|------------|
| Fatal Crashes | 11 | 0 | | 6 | 5 |
| Fatalities | 11 | 0 | | 6 | 5 |
| Fatalities W/Seat Belt | 4 | 0 | | 0 | 4 |
| DUI arrests | 396 | 20 | | 79 | 297 |
| Speeding Citations | 8093 | 321 | | 1483 | 6289 |
| Seat Belt Citations | 814 | 83 | | 97 | 634 |
| Seat Belt Warnings | 436 | 224 | | 85 | 127 |
| Child Restraint Citations | 68 | 8 | | 7 | 53 |
| Child Restraint Warnings | 23 | 2 | | 7 | 14 |
| Highway Collisions | 41 | 6 | | 3 | 32 |
| Alcohol Related Collisions | 264 | 52 | | 97 | 115 |
| Motorist Assists | 2026 | 38 | | 570 | 1418 |

| Thanksgiving Holiday | Regional X Totals | Alaska | Idaho | Oregon | Washington |
|----------------------------|-------------------|--------|-------|--------|------------|
| Fatal Crashes | 12 | | | 7 | 5 |
| Fatalities | 17 | | | 8 | 9 |
| Fatalities W/Seat Belt | 12 | | | 3 | 9 |
| DUI arrests | 518 | | | 68 | 450 |
| Speeding Citations | 5122 | | | 898 | 4224 |
| Seat Belt Citations | 565 | | | 46 | 519 |
| Seat Belt Warnings | 119 | | | 43 | 76 |
| Child Restraint Citations | 43 | | | 3 | 40 |
| Child Restraint Warnings | 11 | | | 2 | 9 |
| Highway Collisions | 53 | | | 5 | 48 |
| Alcohol Related Collisions | 65 | | | 12 | 53 |
| Motorist Assists | 2984 | | | 717 | 2267 |

| CARE Lifesaver Weekend | Regional X Totals | Alaska | Idaho | Oregon | Washington |
|----------------------------|-------------------|--------|-------|--------|------------|
| Fatal Crashes | 6 | | | 4 | 2 |
| Fatalities | 6 | | | 4 | 2 |
| Fatalities W/Seat Belt | 0 | | | 0 | 0 |
| DUI arrests | 310 | | | 33 | 277 |
| Speeding Citations | 1935 | | | 312 | 1623 |
| Seat Belt Citations | 414 | | | 12 | 402 |
| Seat Belt Warnings | 82 | | | 29 | 53 |
| Child Restraint Citations | 33 | | | 2 | 31 |
| Child Restraint Warnings | 6 | | | 0 | 6 |
| Highway Collisions | 19 | | | 0 | 19 |
| Alcohol Related Collisions | 346 | | | 148 | 198 |
| Motorist Assists | 1263 | | | 265 | 998 |